

HenryUSA™

Henry Homesteader 9MM Carbine

Instruction Manual For All H027 Series Rifles



Important:

Study this instruction manual
carefully before you handle this firearm.



HENRY®

Made In America, Or Not Made At All



Henry Repeating Arms Company
107 W. Coleman Street
Rice Lake, WI 54868

Phone: 201.858.4400
Web: www.henryusa.com/contact

If you have any questions or comments regarding your new Henry firearm, please feel free to write or call us.

Use the space below to record information about your new firearm.

Serial Number* _____

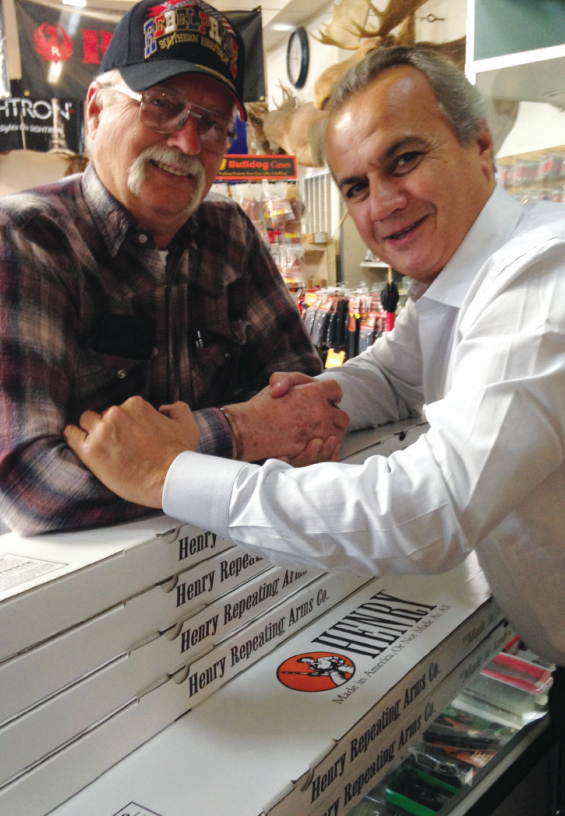
Caliber _____

Purchase Price _____

Purchased From _____

Date of Purchase _____

*The serial number is located on the side of the receiver. Record this number in this manual for future reference.



HENRY[®]


Made In America,
Or Not Made At All

THE HENRY GUARANTEE

Thank you very much for spending your hard earned money to purchase a Henry. I certainly appreciate it and welcome you to the Henry family. As an owner of a Henry, you are backed by our lifetime warranty and my personal guarantee for 100% satisfaction. I will do what it takes to make certain you are happy with your purchase.

Sincerely,

Anthony Imperato

Henry Repeating Arms

Telephone: 201.858.4400

Web: www.henryusa.com

We are confident that you'll enjoy and be proud to own any of our Henry firearms, well known for their reliability, accuracy, handsome looks and smooth action.

Our goal has and always will be to manufacture a line of classic, well-crafted firearms that every enthusiast would find readily affordable.

We take great pride in manufacturing our firearms in the United States, hence our corporate motto "Made in America, or Not Made at All".

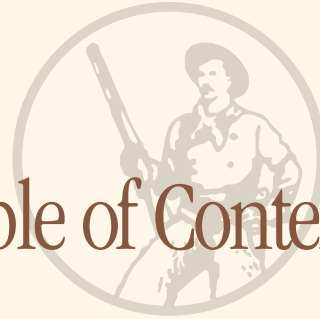


Table of Contents

Warranty	5
Gun Safety and Handling	6
Terminology and Specs	8
Ammunition	10
Shooting Cautions	11

Operating Instructions

How To Use the Safety	12
Maintenance Before Use	13
How To Load Your Henry	13
How To Unload Your Henry	16
How To Adjust Your Sights	17
Malfunction	17

Cleaning, Maintenance & Storage

How To Clean Your Henry	19
Maintenance Before Storage ..	24
Storage Safety	24
Parts	27
Service and Repair	30

SIMPLE LIMITED LIFETIME WARRANTY ON ALL HENRY FIREARMS

It is our promise to you that as long as you own your Henry firearm, it will be free from defects in material and workmanship from the manufacturer. If you have a problem with your Henry firearm, we will fix it at no charge to you. Henry Repeating Arms shall repair, send replacement parts or replace the firearm with a valid warranty claim. If a complete replacement is necessary, the original firearm will not be returned. Henry RAC will provide repairs or replacement at no charge, but will not offer cash, credit, or refund.

WE RESERVE THE RIGHT TO REFUSE SERVICE ON FIREARMS THAT HAVE BEEN ALTERED, ADDED TO, OR SUBSTANTIALLY CHANGED.

Removal of metal from the barrel, or modifications of the firing mechanism and/or operating parts, may lead to a refusal of service on such firearms. There will be a charge for parts and labor to return the firearm to original specifications.

DO NOT, UNDER ANY CIRCUMSTANCES, ALTER THE TRIGGER, "SAFETY" OR OTHER PARTS OF FIRING MECHANISM OF THIS OR ANY

OTHER FIREARM. FAILURE TO OBEY THIS WARNING MAY RESULT IN INJURY OR DEATH.

NOTICE: Henry RAC shall not be responsible for injury, death, or damage to property resulting from either intentional or accidental discharge of this firearm, or from its function when used for purposes or subjected to treatment for which it is not designed.

Whether or not you are experienced in the safe handling of firearms, we urge you to read this entire instruction manual carefully. You must follow the safety instructions for your safety and the safety of others. Should you have any questions concerning the instructions in this manual, please call us at 201-858-4400.

WARNING: If you have little or no experience in the safe handling and operation of a firearm, we strongly urge you to take a firearms safety course from an NRA Certified Instructor or someone with equivalent qualifications before using this or any other firearm. You can contact the NRA Firearms Education and Safety Division at 703-267-1470 for the name of an instructor in your area, or contact your firearms dealer, law enforcement agency or local sportsman's club for training.

GENERAL GUN SAFETY HANDLING

Apply the following safety rules in every situation, with any kind of firearm:

ALWAYS TREAT EVERY FIREARM AS IF IT IS LOADED AND WILL FIRE.

Do not take anyone's word that the firearm is unloaded - always check for yourself. Never pass your firearm to another person until the cylinder or action is open and you visually check that it is unloaded. Keep your firearm unloaded and safely stored when not in use.

ALWAYS BE SURE OF YOUR TARGET AND WHAT IS BEYOND.

A bullet could travel through or past your target for up to 1½ miles. Always be sure your backstop is adequate to stop and contain bullets before beginning target practice so that you do not hit anything outside the range shooting area. If in doubt, don't shoot! Do not fire randomly into the sky.

NEVER SHOOT ACROSS A HIGHWAY OR ANOTHER ROADWAY.

ALWAYS POINT YOUR FIREARM IN A SAFE DIRECTION. NEVER point

a firearm at anyone or anything you do not intend to shoot whether or not it is loaded. This is particularly important when loading, unloading, or field stripping the firearm. ALWAYS control the direction of the firearm; if it fires accidentally, injury, death, or damage to property can be avoided.

NEVER PLACE YOUR FINGER INSIDE THE TRIGGER GUARD OR ON THE TRIGGER UNLESS YOU INTEND TO FIRE.

You should also take care to ensure that other objects do not touch the trigger.

NEVER USE ALCOHOL OR DRUGS BEFORE OR WHILE SHOOTING.

Your vision, motor skills and judgment could be dangerously impaired, making your gun handling unsafe to you and to others. Further, do not use your firearm if you are on any medication which impairs, even slightly, your mental or physical ability.

ALWAYS SEEK A DOCTOR'S ADVICE IF YOU ARE TAKING MEDICATION.

Be sure you are fit to shoot and handle your firearm safely.

NEVER SHOOT AT A HARD SURFACE SUCH AS A ROCK OR A LIQUID

SURFACE SUCH AS WATER. A bullet may ricochet and travel in any direction to strike you or an object you cannot see, causing injury, death or damage to property.

NEVER DISCHARGE A FIREARM NEAR FLAMMABLE MATERIAL. Flame and sparks erupt from the firearm when discharged. They could start a fire or cause flammable liquids to explode.

ALWAYS BE AWARE OF POSSIBLE RISK FROM DROPPING YOUR FIREARM. Some parts of the mechanism could be damaged. You may not see the damage, but it could be severe. The firearm may discharge and cause injury, death, or damage to property. If your firearm has been dropped, have it examined by a competent gunsmith before using it again.

ALWAYS KEEP AND CARRY YOUR FIREARM EMPTY WITH THE HAMMER IN THE "SAFE" POSITION except when you intend to shoot, so that your firearm cannot be fired when you do not intend to fire it.

NEVER CROSS OBSTACLES SUCH AS FENCES OR STREAMS WITH A LOADED FIREARM. Always make certain your firearm is unloaded

before crossing a fence, climbing a tree, jumping a ditch or approaching other obstacles.

NEVER TRANSPORT A LOADED FIREARM. Keep all firearms unloaded during transport, even when stored in a holster, gun case, scabbard or other container.

NEVER WALK, CLIMB, OR FOLLOW A COMPANION WITH YOUR FIREARM COCKED AND READY TO FIRE. When hunting, hold your firearm so that you can always control the direction of the muzzle.

NEVER LEAVE A LOADED FIREARM UNATTENDED. Someone, especially a child, may fire it and cause injury, death, or damage to property.

ALWAYS INSTRUCT CHILDREN AND NON SHOOTERS TO RESPECT FIREARMS. If you teach your children to shoot or get them trained by a qualified instructor, be certain they know how to use the firearm properly and always supervise them closely. Always stress safety so that your children or others will not fire a rifle when or where it is unsafe to do so.

TERMINOLOGY AND DESCRIPTIONS

Congratulations on your purchase of your Henry Homesteader 9mm Carbine.

This auto-loading carbine melds modern ergonomic design and features like a threaded muzzle and interchangeable magazine wells with classic lines and a textured American Walnut stock.

It has a right hand side ejection port, loads from a detachable box magazine and includes fully adjustable sights, along with being factory drilled and tapped for optics.

SPECS

Action Type

Auto-Loading
Semi-Automatic

Caliber

9mm Luger

Capacity

10rds or 5rds

Barrel Length

16.37"

Barrel Type

Round Blue Steel

Rate of Twist

1:10

Overall Length

35.75"

Weight

6.6 lbs.

Receiver Material

Aluminum

Receiver Finish

Hard Anodized

Rear Sight

Adjustable Aperture

Front Sight

Screw on Post

Scopeability

Drilled and Tapped

Scope Mount Type

Weaver 63B

Stock Material

American Walnut

Stock Type

2 Piece Pistol Grip

Buttplate/Pad

Rubber

Length of Pull

14"

Safety

Top Mounted
Thumb Safety
Switch

Handing

Right Hand Side Eject

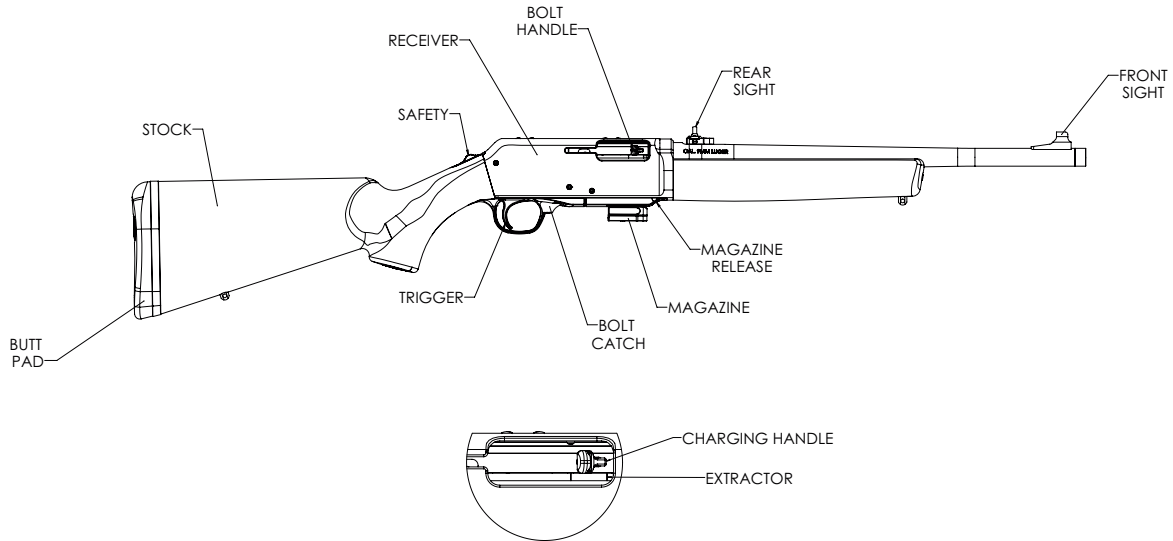
Best Uses

Target/Hunting/Small Game

Embellishments/Extras

Swivel Studs, Removable Magazine, Sighted, Leather Texture Grip Panels, Threaded Muzzle (1/2 x 28) Interchangeable Mag Wells (sold separately on www.henrypride.com)

HENRY HOMESTEADER 9MM



AMMUNITION

ONLY USE DESIGNATED AMMUNITION FOR EACH MODEL.

9MM Luger (Parabellum)

AMMUNITION SELECTION

ALWAYS USE THE CORRECT AMMUNITION FOR YOUR PARTICULAR FIREARM. Henry Repeating Arms Firearms are designed to function with a variety of brands and types of factory manufactured ammunition in the appropriate caliber, but not all ammunition produces the same result. Be sure the only ammunition you carry correctly matches the gauge or caliber you are shooting. Never use non-standard, reloaded, or "hand-loaded" ammunition which has not been subjected to internal ballistic pressure testing. Henry RAC recommends that after you read and understand this manual, you go to the range and fire different ammunition which is appropriate to the caliber of your firearm. Once you find the ammunition which functions best, keep using it.

RANGE AND SHOOTING CAUTIONS

ALWAYS DESIGNATE A KNOWLEDGEABLE AND RESPONSIBLE PERSON TO BE IN CHARGE TO MAINTAIN SAFETY CONTROL WHEN A GROUP IS FIRING ON A RANGE. Obey their commands so that discipline is maintained to reduce the possibility of accidents.

ALWAYS CARRY YOUR FIREARM EMPTY WITH THE ACTION OPEN WHILE ON A RANGE until preparing to fire and keep it pointing towards the backstop when loading, firing, and unloading to eliminate the risk of injury, death or damage to property.

ALWAYS WEAR EYE AND EAR PROTECTION SPECIFIED FOR USE WITH FIREARMS. Flying particles could damage eyes and cause blindness. Without ear protection, the noise of even one shot from your rifle and from other guns close to you could leave a "ringing" in the ears for some time after firing and the cumulative long term effect could be permanent hearing loss. Make sure others in the vicinity of where you are shooting are doing so as well.

During operation, this firearms' bolt cycles quickly with each trigger pull. Powder gas and hot fired brass cases eject quickly to the right as the ejection port opens.

This firearm is designed to be fired from the right shoulder. To prevent injury, hands and face should be kept away from the ejection port when the gun is being fired.

NEVER PUT YOUR FINGER INSIDE THE TRIGGER GUARD UNTIL YOU ARE AIMING AT A TARGET AND READY TO SHOOT. This will prevent you from firing the firearm when it is pointing in an unsafe direction.

NEVER JOKE AROUND OR ENGAGE IN "HORSEPLAY" WHILE HANDLING YOUR FIREARM. Doing so could cause an accidental discharge.



SAFETY

This firearm incorporates a receiver tang mounted thumb safety switch.

It has a serrated surface for positive thumb engagement and will click positively into position when manipulated.

1. To move the safety to the "ON" position when a shot is NOT meant to be fired, pull the safety switch to the rear. Doing so will expose an imprinted 'S'.
2. To move the safety to the "OFF" position, when a shot is intended to be fired, push the safety switch forward. Doing so will expose a red dot indicating the gun is now ready to fire.
3. Step 1 should be repeated to ensure the safety is "ON" as soon as firing is completed and whenever the firearm is NOT on target or being fired.

If you do not have a full understanding of how the safety system works, please call us immediately at 201-858-4400 and ask for technical assistance.

MAINTENANCE BEFORE USE

Before using your firearm for the first time, it should be cleaned. (See the cleaning instructions.) Your firearm was treated at the factory with either a preservative or oil to protect it against corrosion during shipping and storage. Preservative and oil should be wiped from the bore, chamber and exposed areas using a clean swab or patch before using the firearm. See Page 15 for bolt hold open feature. Using that feature allows for cleaning of the bore with a pull through kit available on www.henrypride.com without further disassembly.

Purchase cleaning supplies that are specifically designated for your type and caliber of firearm. Many suppliers offer these in kit form for your convenience. Follow the instructions provided. Whenever your firearm has been exposed to sand, dust, extreme humidity, water or other adverse conditions, it should be cleaned and lubricated.

ASSEMBLY BEFORE USE

Your Henry Homesteader carbine was shipped with the charging handle removed to prevent damage to packaging in transit. You'll find it in the foam insert, under the box flap, in the upper right hand corner.

Push the handle tab into the bolt slot. The curved, serrated face of the handle should face forward, toward the muzzle.



DO NOT EXCEED THE CAPACITY OF THE MAGAZINE.

HOW TO LOAD YOUR HENRY RIFLE

BE SURE TO CLEAR THE RIFLE BEFORE LOADING BY VERIFYING AN EMPTY CHAMBER.

HOLD THE FIREARM WITH THE BUTT PAD PRESSED FIRMLY AGAINST THE SHOULDER DURING OPERATION.

With the muzzle pointed in a safe direction, finger off the trigger and safety in the "ON" position ("S" visible), pull the charging handle to the rear without a magazine inserted and engage the catch lever. Visually inspect the chamber to ensure that it empty before proceeding with loading steps.

LOADING THE MAGAZINE

Load only clean, dry, factory loaded ammunition that matches the caliber stamped on the barrel and manufactured according to US industry specifications.

Load the single stack (5 or 10 round) magazine by pushing the cartridge down against the spring loaded follower while sliding it rearward until retained by the magazine feed lips. Bullets should be facing forward. Repeat until loaded to the desired capacity but do not attempt to exceed the number of rounds the magazine is designed for.

LOADING THE RIFLE AND FIRING

With the muzzle pointed in a safe direction, finger OFF the trigger and safety in the "ON" position, insert a loaded magazine into the magazine well with the bullets pointing towards the muzzle. Verify click or retention by pulling down to make sure magazine is locked.

When you are ready to fire and target is acquired, pull the charging handle all the way rearward and allow it to move forward freely with spring force. A cartridge has now been chambered and the firearm WILL discharge when the safety is switched "OFF" and the trigger is pulled.

TO LOAD AND FIRE IN SINGLE SHOT MODE WITHOUT A MAGAZINE

With the muzzle pointed in a safe direction, finger off the trigger and safety in the "ON" ("S" visible) position, pull the

charging handle back to its complete rearward position, then press the bolt catch lever to hold the bolt in the open position.

WARNING: THIS BLOWBACK FIREARM BOLT IS UNDER HEAVY SPRING TENSION AND MAY CAUSE INJURY TO FINGERS IF CARE IS NOT TAKEN TO ENSURE THE BOLT IS LOCKED OPEN WHEN SINGLE LOADING.

Carefully place a cartridge into the chamber through the open ejection port. With fingers clear, retract the charging handle completely to the rear which will unlock the bolt catch and release the charging handle. Be sure to never 'ride' the bolt forward and instead allow it to move forward freely.

A cartridge is now loaded and when a safe target is acquired, switch the safety "OFF" to fire. Note that without a magazine present, the bolt catch will not engage automatically. Care should be taken to know the firearms loaded/unloaded

condition if the firearm is in this mode and the safety should be switched to the "ON" position whenever the magazine is not inserted and/or the bolt is not locked open.

BOLT HOLD OPEN FEATURE

The bolt catch is designed to engage the follower of an empty magazine. It will lock the bolt open in the rearward position automatically when a loaded magazine is fired until empty.

It can also be set manually by pulling the charging handle back until the bolt has traveled completely rearward and pressing the bolt catch lever. Practice this step to learn where the catch is.

You can also lock the bolt open by inserting an empty magazine and pulling the charging handle fully



rearward. In that case, the bolt will hold open on the empty magazine follower.

REVERSIBLE CHARGING HANDLE

The ejection port is on the right hand side only, but the charging handle can be reversed to suit an operators preference for controls layout. With the muzzle pointed in a safe direction, finger off the trigger and safety in the "ON" (S) position, pull the charging handle fully rearward, then press the bolt catch lever. The charging handle can now be pulled straight out, perpendicular to the receiver and inserted in the slot on the opposite side of the receiver. When pushed firmly in place, the bolt can be released and the charging handle will be retained.

HOW TO UNLOAD YOUR HENRY HOMESTEADER 9MM CARBINE

ALWAYS ASSUME THE CHAMBER IS LOADED, EVEN AFTER REMOVING THE MAGAZINE FROM THE RECEIVER.

1. With the muzzle pointed in a safe direction, and your finger OFF the trigger and safety in the "ON" ("S" safe) position, press the magazine release on the center front of the magazine well, then pull the magazine free.
2. Pull the bolt fully to the rear and press the bolt catch lever to hold the bolt open. This will eject an unfired round from the chamber if the magazine was not empty.
3. Visually inspect the chamber to verify the firearms unloaded condition prior to casing or storing.

UNLOADING THE MAGAZINE

A loaded magazine can be manually unloaded by sliding

cartridges from the rear, then push forward, out of the magazine, one at a time.

SIGHTS AND ADJUSTMENTS

The front sight on this model is not adjustable and all windage and elevation adjustments should be made to the rear sight.

UP/DOWN (ELEVATION ADJUSTMENT)

The stem of the aperture is threaded and by turning it 1/2 a revolution, you'll change the point of impact approximately 1" at 100 yards. First, loosen either windage screw at the base of the rear sight. Turn the aperture counterclockwise to raise the point of impact or clockwise to lower the point of impact. Be sure to re-tighten the screw to lock it in.

LEFT/RIGHT (WINDAGE ADJUSTMENT)

Loosen both the left and right windage screws on the base of the rear sight. You can now slide the sight left or right in the dovetail. If you're shooting to the left of the target, slide the sight to the right and vice versa. You always want to move the sight in the direction you want the bullet to impact.

MALFUNCTION AND TROUBLESHOOTING

NEVER USE YOUR FIREARM IF IT FAILS TO FUNCTION PROPERLY, AND NEVER FORCE A JAMMED ACTION. Forcing the action could make the round explode, causing serious injury, possible death, or severe damage to your firearm or other property.

FAILURE TO FIRE. A misfire occurs when the firing pin

strikes the primer and it does not fire. **IF THE FIREARM FAILS TO FIRE DO NOT PUT IT DOWN OR OPEN THE ACTION. ALWAYS HOLD THE FIREARM, KEEPING IT POINTED IN A SAFE DIRECTION AND WAIT 30 SECONDS. IF A HANGFIRE (SLOW IGNITION) HAS OCCURRED, THE ROUND WILL FIRE WITHIN 30 SECONDS.**

If the round does not fire, remove the ammunition, eject the round and examine the shell. If the firing pin indent on the primer is light or non-existent, have the firearm examined by a competent gunsmith before firing again. If the firing pin indent on the primer appears normal (in comparison with similar previously fired rounds) assume you have faulty ammunition. Segregate the misfired round from other live ammunition and empty cases, reload, and carry on firing.

FAILURE TO EXTRACT (FTE). This is when the firearm discharges the round and fails to extract the spent round from the chamber.

This could happen because of a bad extractor or bad/damaged casings.

FAILURE TO FEED (FTF). This is simply when the firearm fails to feed another round into the chamber.

NOTE: The ejection port should face the ground; this will allow the round to easily fall out (gravity is your friend here). This will work for both left and right handed shooters.



CLEANING, STORAGE AND MAINTENANCE

CLEANING SAFETY PRECAUTIONS

WARNING: BEFORE PERFORMING CLEANING PROCEDURES, KEEP THE MUZZLE POINTED IN A SAFE

DIRECTION AND KEEP YOUR FINGER OFF THE TRIGGER. FAILURE TO FOLLOW THESE WARNINGS COULD RESULT IN SERIOUS INJURY OR DEATH.

KEEP ALL AMMUNITION AWAY FROM THE CLEANING AREA. NEVER TEST THE MECHANICAL FUNCTION OF YOUR RIFLE WITH LIVE AMMUNITION. FAILURE TO FOLLOW THESE WARNINGS COULD RESULT IN SERIOUS INJURY OR DEATH.

THE MAGAZINE SHOULD BE REMOVED FROM THE MAGAZINE WELL AND ACTION LOCKED OPEN USING THE BOLT STOP LEVER AS DESCRIBED ON PAGE 15 BEFORE ATTEMPTING DISASSEMBLY.

NOTICE! It is very important that the bore of your rifle be cleaned thoroughly and promptly after shooting. Do not leave discharged (empty) cases in the chambers for any length of time, as the chemical composition of many cartridges contain moisture which

can “sweat” out of the shell and onto the chambers’ surfaces, and possibly cause corrosion and rust.

HOW TO CLEAN YOUR HENRY RIFLE

WE SUGGEST THAT YOU USE A MILD SOLVENT FROM A WELL-KNOWN BRAND. FOR CONVENIENCE, COMPATIBLE CLEANING SOLVENTS ARE AVAILABLE ON WWW.HENRYPRIDE.COM.

Regular cleaning is important in order for your gun to operate efficiently and safely. Taking proper care of it will also maintain its value and extend its life.

NOTICE! DO NOT ATTEMPT TO TAKE YOUR FIREARM APART FURTHER THAN EXPLAINED IN THIS MANUAL. Your firearm is a specialized, finely fitted mechanism. You may permanently damage it by attempting to disassemble the inner mechanisms. If further disassembly for service or cleaning is required, take your firearm to a qualified gunsmith.

HOW TO CLEAN YOUR HENRY RIFLE

Safety glasses should be worn as many components are under spring tension. Be sure to verify the firearms unloaded condition before proceeding.

MAGAZINES

Routine maintenance consists of brushing the follower clean and using a plastic safe solvent to clean it and the magazine body. Be sure to check for any damage to feed lips and verify the followers ability to move up and down freely. The floor plate can also be removed by pushing the button on the base and sliding forward. That will allow access for cleaning of the spring and follower.

DISASSEMBLY

The gun can be taken down into three main components by driving the three receiver cross pins (Part # H27-88) out with a 1/8" roll pin punch. Holding the forearm with one hand and stock with the other, slide the trigger group out of the receiver along

with the buttstock using downward pressure on the top of the stock wrist to slide it out of the receiver groove. The magazine well comes free after rocking back/forth. You'll now have the gun broken down into three components and since the receiver holds the most fouling, further disassembly is generally not required.

The Hammer/trigger group can now be sprayed and brushed clean. The trigger is non-adjustable and further disassembly of that assembly should not be attempted. If the bore has already been cleaned with the gun assembled and bolt held open, spray, brush and patch the bolt and inner receiver clean where accumulated fouling is seen. Dry, then coat all metal surfaces with a thin film of good quality light gun oil.

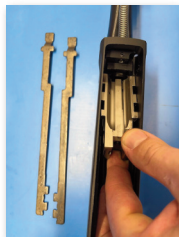


Unscrew the forearm screw (1/8"), then slide the forearm forward and out of the receiver slot.

WARNING: THE RECOIL SPRING IS UNDER HEAVY TENSION AND SHOULD BE HELD TIGHT WHILE REMOVING THE ROD AND WEIGHT.

With the left hand, thumb and index finger, pinch and hold the guide rod ahead of the weight, then push back on the weight until the front tabs of the action bars can be peeled away from the weight. Now pop the rear action bar tabs out of the bolt and remove them.

Pull the charging handle out and remove the bolt for cleaning.



WOOD CARE

The wood pores of this model's American Walnut stocks are sealed with a satin polyurethane finish and require little maintenance. You can find a stock and grip cloth offered on www.henrypride.com.

Your gun should be cleaned every time it is used. A minimum cleaning includes wiping down the action and oiling key parts. Regular maintenance will also include cleaning the barrel.

WHENEVER POSSIBLE, CLEAN THE BORE IN THE DIRECTION OF BULLET TRAVEL. When you fire your gun, powder residue is deposited into the barrel bore. Improperly cleaning from muzzle to breech will cause this powder residue to be carried from the bore into the chamber and action, causing fouling of intricate parts and warranting more thorough cleaning by a qualified gunsmith. To properly clean from breech to muzzle, use a pull-through cleaning kit, such as those available on

www.henrypride.com. If desired, a cleaning rod and patches may be used, but care must be taken to avoid damaging the muzzle crown as well as depositing fouling into action.

REASSEMBLY

Replace the bolt and re-insert the charging handle.

Fit the right side bar (left and right specific) rear tabs into their bolt slots. Push back on the weight against the spring to fit the front tab to the weight. When slowly released, the front tab will slide home. Repeat for the left hand side.

Attach the forearm.

Fit the front tab of the magazine well into the receiver slot and push forward until seated.

Align the receiver and trigger guard grooves to slide the two halves back together. Replace the receiver pins from either direction. With the muzzle pointed in a safe direction, pull the

charging to the rear to switch the safety "OFF" and dry fire the rifle to test function.

DRY FIRING

This model may be dry-fired to practice trigger pull without causing the firearm any harm. Be sure to verify the firearms unloaded condition and keep the muzzle pointed in a safe direction.

NEVER RUN A BRUSH IN THE BARREL FIRST. This will damage the firearm. The brush will pick up dirt, moisture or powder residue and deposit it into the chamber or receiver. Never dip a brush in solvent. The solvent at the brush core will collect dirt and drop it into the receiver and chamber. Remember - Rust is neglect. Make sure all exposed metal surfaces are coated with a film of oil. After being subjected to damp weather, thoroughly wipe the bore and metal

surfaces. Then apply a new film of oil. If exposed to a soaking rain, snow or salt spray, a more thorough cleaning and oiling may be necessary.

Wipe the bolt clean of any debris with solvent and a patch or small rag. Lightly oil bolt.

A gun brought out of prolonged storage should also be cleaned before shooting. Accumulated moisture and dirt, or solidified grease and oil, can prevent the gun from operating properly. We recommend the use of pull through cleaning kits. Overtime, depending on the amount of use and how it is stored, we do recommend that you take your Henry to a gunsmith to have it inspected at which time it can also be cleaned more thoroughly.

REPLACING THE INTERCHANGABLE MAGAZINE WELL

Additional magazine wells are available at www.henrypride.com. This will allow for use of a higher capacity pistol magazine from popular brands.



With the muzzle pointed in a safe direction, with your finger off the trigger and safety switched to the "ON" (S) position, drive the three cross pins out of the receiver from either direction.

Slide the trigger group and buttstock assembly away from the receiver.

Pop the magazine well front tab out of the receiver.

Swap wells, then reassemble in reverse.

MAINTENANCE BEFORE STORAGE

When storing your firearm, do not encase it in anything that will attract or hold moisture, for example, leather or heavy cloth. Also, do not store firearms with a plug inserted in the barrel because this can be a contributing factor to moisture accumulation.

If your firearm is to be stored for an extended period, the bore, chamber and internal surfaces should be oiled with a high-quality lubricating oil or preservative intended for firearms. The external parts; receiver, bolt and barrel should be coated with an anti-rust oil.

Before using your firearm again, be sure to clean it. Every time you clean your firearm, check it for signs of wear. If wear is noted, do not use the firearm, have it checked by a qualified gunsmith.

Make sure your firearm is in good mechanical condition before firing it. Periodically have your firearm checked for signs of erosion, cracking, or wear by the factory or a factory certified gunsmith.

STORAGE SAFETY AND PRECAUTIONS

NEVER LOCK A LOADED FIREARM AND NEVER LOAD A LOCKED FIREARM!

ALWAYS CHECK TO MAKE SURE YOUR FIREARM IS NOT LOADED BEFORE CLEANING, STORING, TRANSPORTING IT, LAYING IT DOWN, OR HANDING IT TO ANOTHER PERSON so that it cannot be fired when it is unsafe to do so.

ALWAYS KEEP AND STORE YOUR FIREARM AND AMMUNITION IN SEPARATE, LOCKED LOCATIONS, OUT OF REACH AND SIGHT OF CHILDREN AND UNTRAINED PERSONS. Safe and secure storage of your firearm and ammunition are your responsibility.

NEVER LEAVE THE KEY TO THE LOCK FOR YOUR FIREARM WITH THE STORED FIREARM!

NEVER ASSUME THAT A "HIDING" PLACE IS A SECURE STORAGE METHOD. Others may be aware of your storage location or come upon it by chance. It is your personal responsibility to use common sense when storing your firearm and ammunition and to always make sure they are not accessible to children or other unauthorized persons.

NOTE: Do not store your firearm in an air-tight container, and do not seal or attempt to seal the barrel to exclude dust, as the internal steel surface is more likely to rust or corrode by doing this.

BEWARE OF BARREL OBSTRUCTIONS. Be sure the barrel is clear of obstructions before shooting. Mud, water, snow or other objects may inadvertently lodge in the barrel bore. A small

obstruction can cause a dangerous increase in pressure and may damage your firearm and cause injury to yourself and others.

BEFORE CHECKING FOR A BARREL OBSTRUCTION, BE CERTAIN YOUR FIREARM IS COMPLETELY UNLOADED. After assuring yourself that the firearm is completely unloaded, open the action and look through the barrel to be sure it is clear of obstructions. If an obstruction is seen, no matter how small it may be, clean the bore with a cleaning cord or a patch as described in the **CLEANING** section of this owner's manual.

BE SURE ALL ACCESSORIES, SUCH AS SLINGS, SCOPES AND OTHER ACCESSORIES ARE COMPATIBLE WITH YOUR PARTICULAR FIREARM AND THAT THE ACCESSORIES DO NOT INTERFERE WITH ITS SAFE OPERATION.

It is your responsibility to understand and follow all of the instructions in the safety manual that accompanied your firearm,

as well as those which may be supplied with your ammunition and any accessory.

NEVER DISASSEMBLE YOUR FIREARM BEYOND THE FIELD STRIPPING PROCEDURE OUTLINED IN THIS MANUAL. Improper disassembly or reassembly of your firearm may be dangerous and can lead to serious injury or death.

NEVER MANIPULATE, ADJUST OR CHANGE ANY OF THE INTERNAL COMPONENTS OF YOUR FIREARM UNLESS SPECIFICALLY INSTRUCTED TO DO SO IN THIS MANUAL. Improper manipulation of any other internal component may affect the safety and reliability of your firearm and may cause serious injury or death.

NEVER ALLOW ANY ALTERATION OR REPLACEMENT OF PARTS IN YOUR FIREARM UNLESS PERFORMED BY A QUALIFIED GUNSMITH USING AUTHORIZED PARTS. If you do

otherwise, improper functioning of your firearm may occur and serious injury or death and damage to property may result.



GUN PARTS

An illustration and list of part names are included in this manual. Please note that not all parts are available for sale. Those parts which are available should be installed by a licensed gunsmith. When ordering parts, please give part name and part number.

Important: If you make unauthorized adjustments or use unauthorized parts, Henry Repeating Arms Company will not assume responsibility for the proper functioning of the firearm.

THIS GUN IS MANUFACTURED TO PERFORM PROPERLY WITH THE ORIGINAL PARTS AS DESIGNED. IT IS YOUR DUTY TO MAKE SURE ANY PARTS YOU BUY ARE

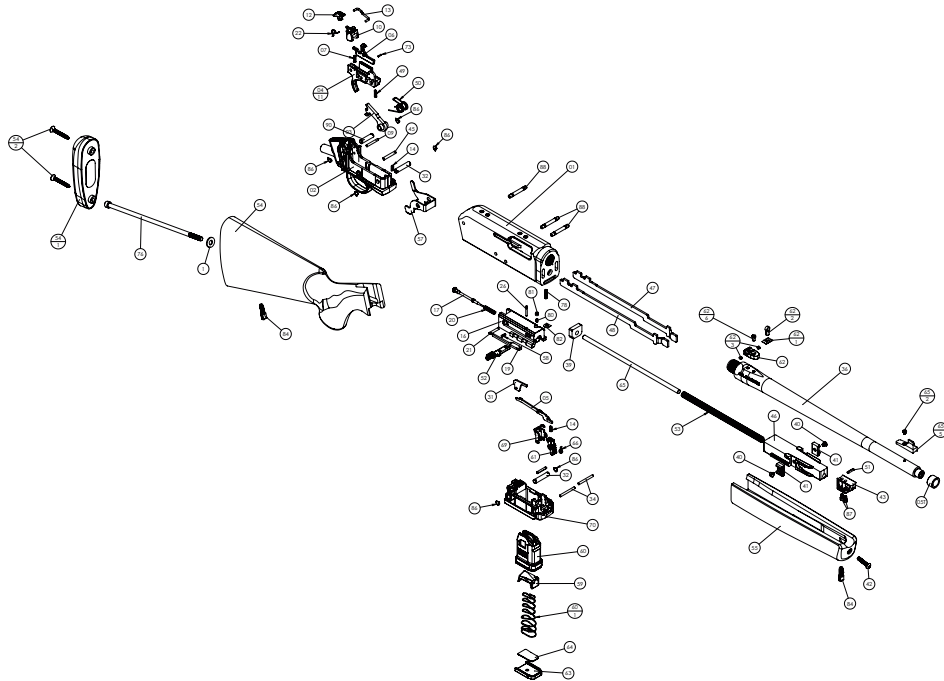
INSTALLED CORRECTLY AND THAT NEITHER REPLACEMENTS NOR ORIGINALS ARE ALTERED OR CHANGED. THIS IS WHY WE SAY TAKE IT TO A LICENSED GUNSMITH STATION. YOUR GUN IS A COMPLEX TOOL WITH MANY PARTS THAT MUST RELATE CORRECTLY TO OTHER PARTS. PUTTING A GUN TOGETHER WRONG OR WITH MODIFIED PARTS CAN RESULT IN A DAMAGED GUN, DANGER, AND INJURY OR DEATH TO YOU AND OTHERS THROUGH MALFUNCTION. ALWAYS LET A QUALIFIED GUNSMITH WORK ON YOUR GUN AND CHECK ANY WORK YOU THINK WAS NOT PERFORMED BY A GUNSMITH.

⚠️WARNING: This product can expose you to chemicals including lead, which is known to the State of California to cause cancer and birth defects or other reproductive harm. For more information go to www.P65Warnings.ca.gov/product.

LIST OF PARTS

01	Receiver	26	Extractor Pin	55	Forearm	84	Swivel Screw
02	Trigger Guard	31	Ejector	57	Bolt Catch Lever	86	Pin Retainer Tube Clip
03	Hammer	32	Pin Retainer Tube	58	Extractor Spring	87	Screw
04	Trigger Subassembly	34	Mag. Release Pivot Pin	59	Magazine Follower	88	Retainer Pin
05	Bolt Catch	36	9mm Barrel	60	Magazine Tube	54-1	Butt Pad
06	Disconnecter	39	Action Buffer	61	Magazine Release	54-2	Butt Pad Screws
07	Disconnecter Spring	40	Bolt Weight Block Screw	63	Floor Plate	62	Rear Sight
09	Safety Axle Pin	41	Bolt Weight Block	64	Inner Plate	62-1	Peep Dovetail
10	Safety Axle	42	Forearm Attachment Screw	65	Action Spring Guide Rod	62-2	Peep Sight
11	Sear	43	Guide Rod Support	66	Magazine Release Spring	62-3	Rear Sight Screw, Ghost Ring
12	Safety Button	45	Trigger Pivot Pin	69	Feed Ramp Insert	62-6	Rear Sight Screw
13	Safety Button Link	46	Front Bolt Weight	70	Magazine Well	90	Retainer Pin Tube
14	Bolt Catch Spring	47	Left Action Bar	73	Disconnecter Stop Pin	65-5	Front Sight Ramp
16	Bolt	48	Right Action Bar	76	Buttstock Bolt	65-2	Front Sight Screw
17	Firing Pin	50	Hammer Spring	77	Buttstock Washer	60-1	Magazine Spring
19	Extractor	51	Guide Rod Retaining Pin	78	Flat Tip Set Screw	05T	Thread Protector
20	Firing Pin Spring	52	Bolt Handle	80	Bolt Handle Detent Spring	49	Trigger Return Spring
21	Firing Pin Retention Pin	53	Action Spring	81	Bolt Handle Detent Plunger		
22	Safety Detent Spring	54	Buttstock	82	Bolt Handle Detent Retainer		

ILLUSTRATION OF PARTS



SERVICING AND REPAIR

If you believe that your Henry firearm requires repair or adjustment, we suggest that you first contact our Customer Service by visiting the “Contact Us” page on our website, or by phone at 201.858.4400. It may be a problem that we can resolve by phone or by sending a replacement part. For international customers please visit the “Contact Us” page on our website for instructions.

In the unlikely event that your firearm requires adjustments or repair, please make certain that it is unloaded and send it to us at the following address:

HRAC

Att: Repair Dept.

107 W. Coleman Street
Rice Lake, WI 54868

Enclose an explanation of the problem in as much detail as possible.

Make certain to include your complete name, address, phone number and serial number. Make sure your firearm is packaged to prevent it from being damaged. The package should be insured to protect against LOSS OR THEFT.

DO NOT INCLUDE "HENRY REPEATING ARMS" IN THE ADDRESS ON THE PACKAGE, IN ORDER TO PREVENT AN INQUISITIVE THIEF FROM BEING ATTRACTED TO IT BY SUCH INFORMATION.

YOU CAN USE THE ORIGINAL BOX FOR RETURN, HOWEVER, YOU SHOULD MAKE SURE IT IS WRAPPED IN A BROWN OR OTHER COLORED PAPER AS TO NOT INDICATE THAT THE BOX CONTAINS A FIREARM. THIS HELPS TO MAINTAIN THE CONFIDENTIALITY OF YOUR RIFLE TO ENSURE IT GETS BACK TO US SAFELY.

NEW PRODUCTS FROM HENRY

Henry Repeating Arms Company will endeavor to introduce and manufacture other fine firearms, all made in America, of high quality and at affordable prices.

Telephone: **201-858-4400** • Fax: **201-858-4435**

Website: **www.henryusa.com**



HENRY[®]



**Made In America,
Or Not Made At All**

History and Thank You



Benjamin Tyler Henry.

His invention: The Henry Rifle.

Thank you for purchasing your new Henry Firearm. We are proud to have crafted this firearm for you in the great tradition of the Henry Repeating Rifle which dates back to 1860 when the first effective, lever-action repeating rifle was developed by Benjamin Tyler Henry. The lever action is America's unique contribution to international firearms design; We go to great lengths to provide the highest quality of design and craftsmanship for each and every one of our American-Made firearms. You are now a part of the Henry family, and we are thankful to have your support. Your new rifle should provide you and your family with many years of safe enjoyment and pride of ownership.

It is imperative that these cautions and operating instructions be thoroughly studied and understood before using your new firearm, in order to ensure proper and safe gun handling. Failure to follow these cautions, warnings and operating instructions could result in damage to your gun or to other property or could result in injury or death to yourself or to others.

Made in America



Made In America, Or Not Made At All

IS A REGISTERED TRADEMARK
OF THE HENRY REPEATING ARMS COMPANY

TEL. **201.858.4400**

FAX. **201.858.4435**

WEBSITE. **www.henryusa.com**

FOR PARTS & ACCESSORIES PLEASE VISIT HENRY PRIDE: **www.henrypride.com**

Warning:

BEFORE USING FIREARM, READ AND FOLLOW THESE INSTRUCTIONS.

If there is anything you do not understand,
get help from someone qualified to teach the safe handling of firearms.

H27-300

4.22

SOCIALIZE WITH HENRY AND HENRY OWNERS

Keep up to date with new inventions and products from Henry as well as meet other Henry owners around the country by joining the conversation and liking our social media accounts:



www.facebook.com/henryrepeating



@Henry_Rifles



@HenryRifles



www.youtube.com/c/HenryriflesUSA

Be the first to know about new products and events by subscribing to our e-mail list:
www.henryusa.com/maillinglist

HENRY CUSTOMER PHOTOS

You may already be famous, but if not, we invite you to send a photo with your Henry for a possible website appearance to:
info@henryusa.com

HENRY ACCESSORIES

Made in America, just like our rifles! Find apparel, slings, scope mounts, gun cases, display cases and more at www.henrypride.com